



INSTALLATION INSTRUCTIONS FOR SUTERA CS-2

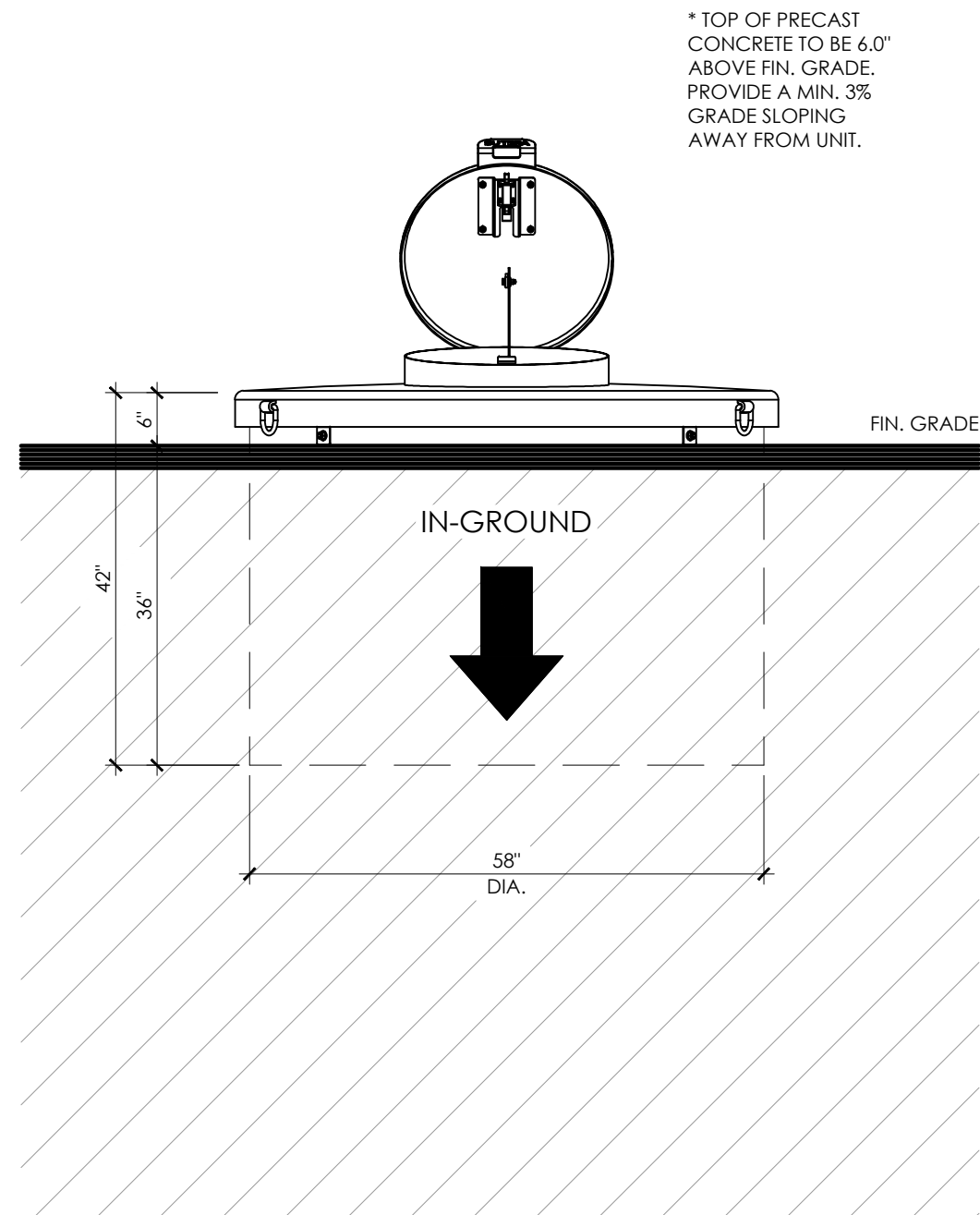
FULLY IN-GROUND STEEL LID 2 cu.yd. CONTAINMENT CAPACITY FOR USED COOKING OILS





INSTALLATION INSTRUCTIONS

CS-2



INSTALLATION INSTRUCTIONS

REQUIRED TOOLS, EQUIPMENT, MACHINERY:

- EXCAVATOR
- DUMP TRUCK
- JUMPING JACK, PLATE COMPACTOR
- BUILDERS LEVEL
- STORY ROD
- HAND LEVEL (6ft.)
- LASER LEVEL
- TAPE MEASURE
- HAND SHOVEL
- HAND RAKE
- LIFTING STRAPS FOR PRECAST CONCRETE AND STEEL LID
- HAMMER DRILL

STEP No.1 - DETERMINE SITE LOCATION (SEE PG.2)

- NO OVERHEAD POWER LINES
- NO TREE OVERHANG
- NO CANOPY OVERHANG
- HAVE A SITE UTILITY LOCATE (UNDERGROUND) CONDUCTED WITHIN AREA OF PROPOSED INSTALLATION
- BE WITHIN REACH OF SERVICE CRANE TRUCK

STEP No.2 - EXCAVATION (SEE PG.3)

- TOP OF PRECAST TO BE 6.0" ABOVE FINISHED GRADE. PROVIDE A MIN. 3% GRADE SLOPING AWAY FROM UNIT.
- EXCAVATE TO THE REQUIRE WIDTH AND DEPTH.
- LEVEL AND COMPACT THE BASE OF EXCAVATION.
- APPROX. 2.0 cu.yds. OF MATERIAL TO BE REMOVED FROM SITE PER SUTERA CS-2.

STEP No.3 - INSTALLATION OF PRECAST CONCRETE (SEE PG.4)

- TAKE DELIVERY OF PRECAST UNIT WITH DELIVERY TRUCK CRANE, SITE CRANE OR EXCAVATOR, WHICHEVER IS AVAILABLE OR REQUIRED.
- USING SWIFT LIFT HOOK ANCHORS, 2 PER PRECAST UNIT, LIFT THE PRECAST MONOBASE AND SET INTO PLACE, ENSURE LEVEL, BOTH HORIZ. AND VERT.
- ENSURE TOP OF PRECAST IS 6.0" ABOVE FINISHED GRADE, PROVIDE A MIN. 3% GRADE SLOPING AWAY FROM UNIT.
- DO NOT ALLOW DEBRIS OR WATER TO ENTER THE OPEN CONCRETE WELL, KEEP CLEAN AND DRY.

STEP No.4 - BACKFILL (SEE PG.5)

- SUTERA UNITS OVERALL MASS EXCEED THE NATURAL FORCES OF HYDROSTATIC PRESSURE AND WILL NOT FLOAT OUT OF THE GROUND, NO EXTRA MEASURES ARE REQUIRED TO KEEP IT IN THE GROUND.
- BACKFILL WITH NATIVE MATERIAL (EXCAVATED MATERIAL MAY BE USED IF SUITABLE).
- COMPACT IN SMALL LAYERS TO ACHIEVE 95% PROCTOR.
- DO NOT ALLOW DEBRIS OR WATER TO ENTER THE OPEN CONCRETE WELL, KEEP CLEAN AND DRY.

STEP No.5 - PLACING STEEL LID ON THE PRECAST WELL (SEE PG.6)

- LIFT THE STEEL LID WITH THE REQUIRED LIFTING STRAPS CONNECTED TO THE THREE (3) WELDED D-RINGS, WEIGHT OF STEEL LID IS 350 lbs (159 kg).
- LOWER ONTO PRECAST CONCRETE WELL, TAKING CAUTION NOT TO BEND THE FOUR (4) FASTENING TABS.
- ALIGN THE ACCESS LID TO THE REQUIRED POSITION.

STEP No.6 - FASTENING STEEL LID TO PRECAST CONCRETE WELL

- USING THE FOUR (4) STEEL FASTENING TABS AS A GUIDE, DRILL 0.5" DIA. HOLES 3.0" DEEP.
- INSTALL FOUR (4) 0.5" x 3.75" CONCRETE WEDGE ANCHORS AND TIGHTEN.

INSTALLATION IS NOW COMPLETE

NOTE:
ALL DIMENSIONS ARE
IN INCHES UNLESS
OTHERWISE SPECIFIED

DETERMINE SITE LOCATION

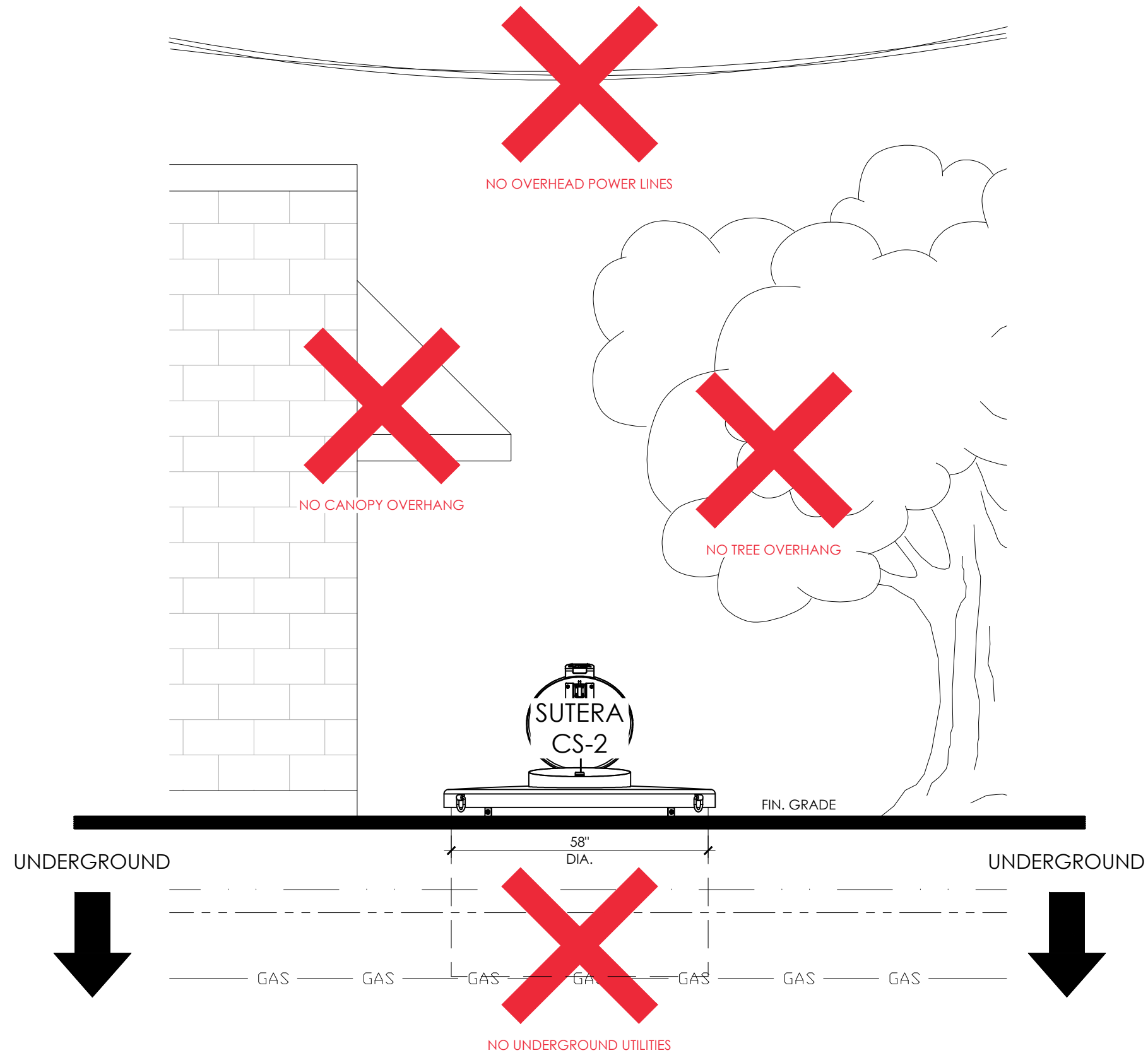
STEP No.1



INSTALLATION
INSTRUCTIONS

CS-2

- STEP No.1 - DETERMINE SITE LOCATION
- a. NO OVERHEAD POWER LINES
 - b. NO TREE OVERHANG
 - c. NO CANOPY OVERHANG
 - d. HAVE A SITE UTILITY LOCATE (UNDERGROUND) CONDUCTED WITHIN AREA OF PROPOSED INSTALLATION
 - e. BE WITHIN REACH OF SERVICE VACUUM TRUCK



NOTE:
ALL DIMENSIONS ARE
IN INCHES UNLESS
OTHERWISE SPECIFIED

EXCAVATION

STEP No.2



INSTALLATION
INSTRUCTIONS

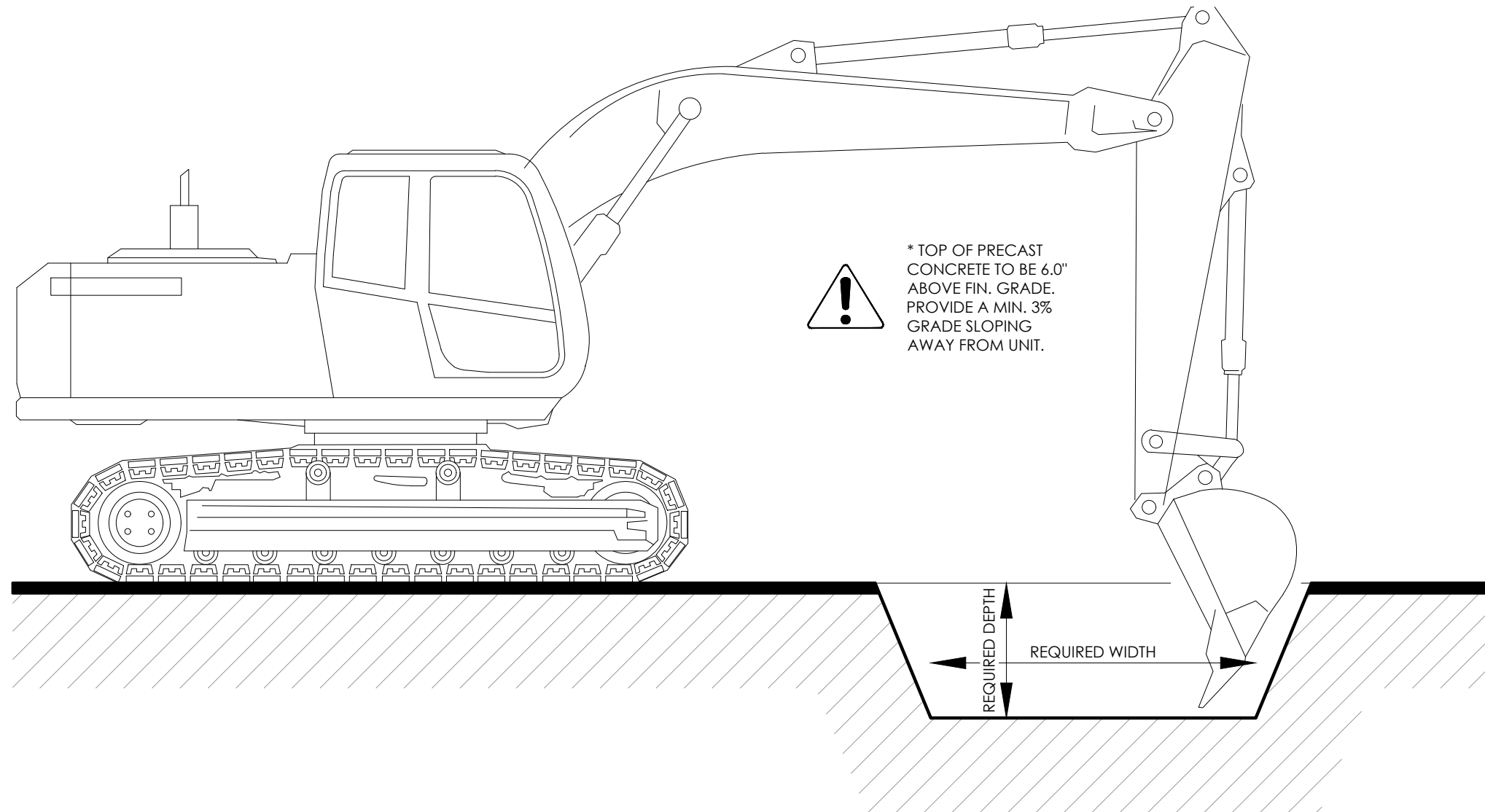
CS-2

STEP No.2 - EXCAVATION

- TOP OF PRECAST TO BE 6.0" ABOVE FINISHED GRADE. PROVIDE A MIN. 3% GRADE SLOPING AWAY FROM UNIT.
- EXCAVATE TO THE REQUIRE WIDTH AND DEPTH.
- LEVEL AND COMPACT THE BASE OF EXCAVATION.
- APPROX. 2.0 cu.yds. OF MATERIAL TO BE REMOVED FROM SITE PER SUTERA CS-2.

NOTE:
ALL DIMENSIONS ARE
IN INCHES UNLESS
OTHERWISE SPECIFIED

pg. 3 of 7



INSTALLATION OF PRECAST CONCRETE

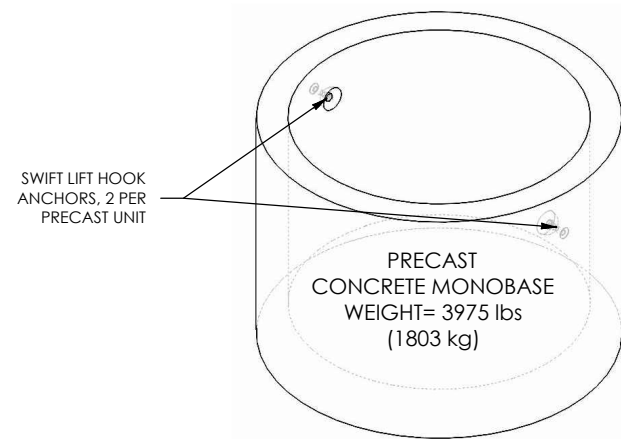
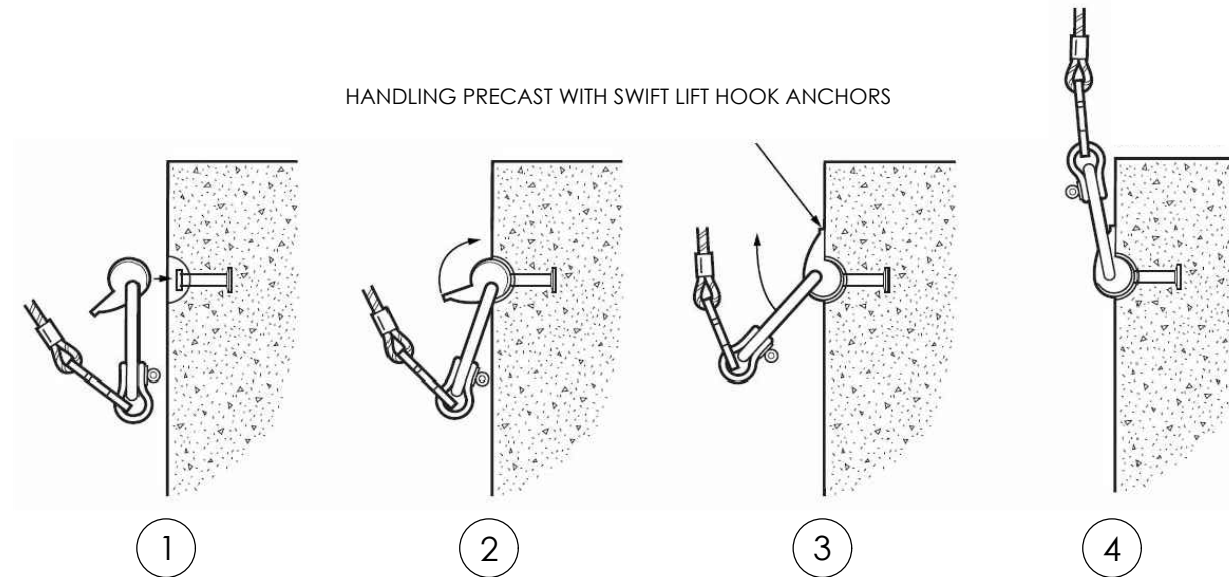
STEP No.3



INSTALLATION
INSTRUCTIONS

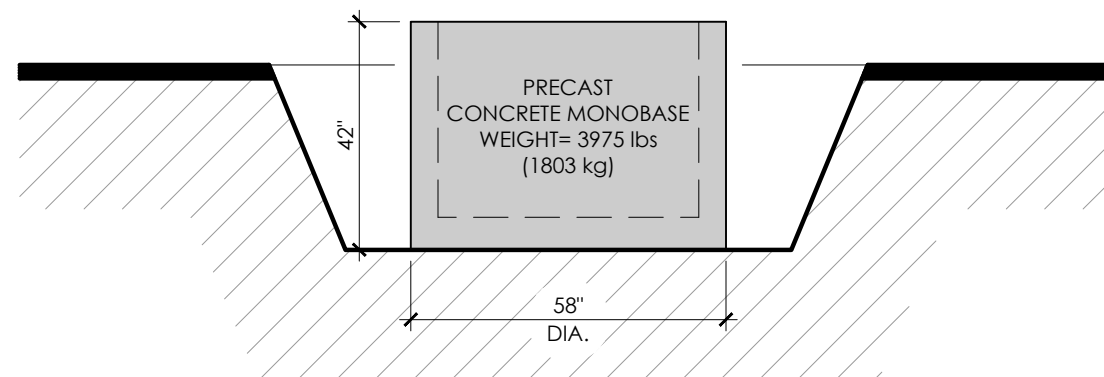
CS-2

HANDLING PRECAST WITH SWIFT LIFT HOOK ANCHORS



STEP No.3 - INSTALLATION OF PRECAST CONCRETE

- a. TAKE DELIVERY OF PRECAST UNIT WITH DELIVERY TRUCK CRANE, SITE CRANE OR EXCAVATOR, WHICHEVER IS AVAILABLE OR REQUIRED.
- b. USING SWIFT LIFT HOOK ANCHORS, 2 PER PRECAST UNIT, LIFT THE PRECAST MONOBASE AND SET INTO PLACE, ENSURE LEVEL, BOTH HORIZ. AND VERT.
- c. ENSURE TOP OF PRECAST IS 6.0" ABOVE FINISHED GRADE, PROVIDE A MIN. 3% GRADE SLOPING AWAY FROM UNIT.
- d. DO NOT ALLOW DEBRIS OR WATER TO ENTER THE OPEN CONCRETE WELL, KEEP CLEAN AND DRY.



NOTE:
ALL DIMENSIONS ARE
IN INCHES UNLESS
OTHERWISE SPECIFIED

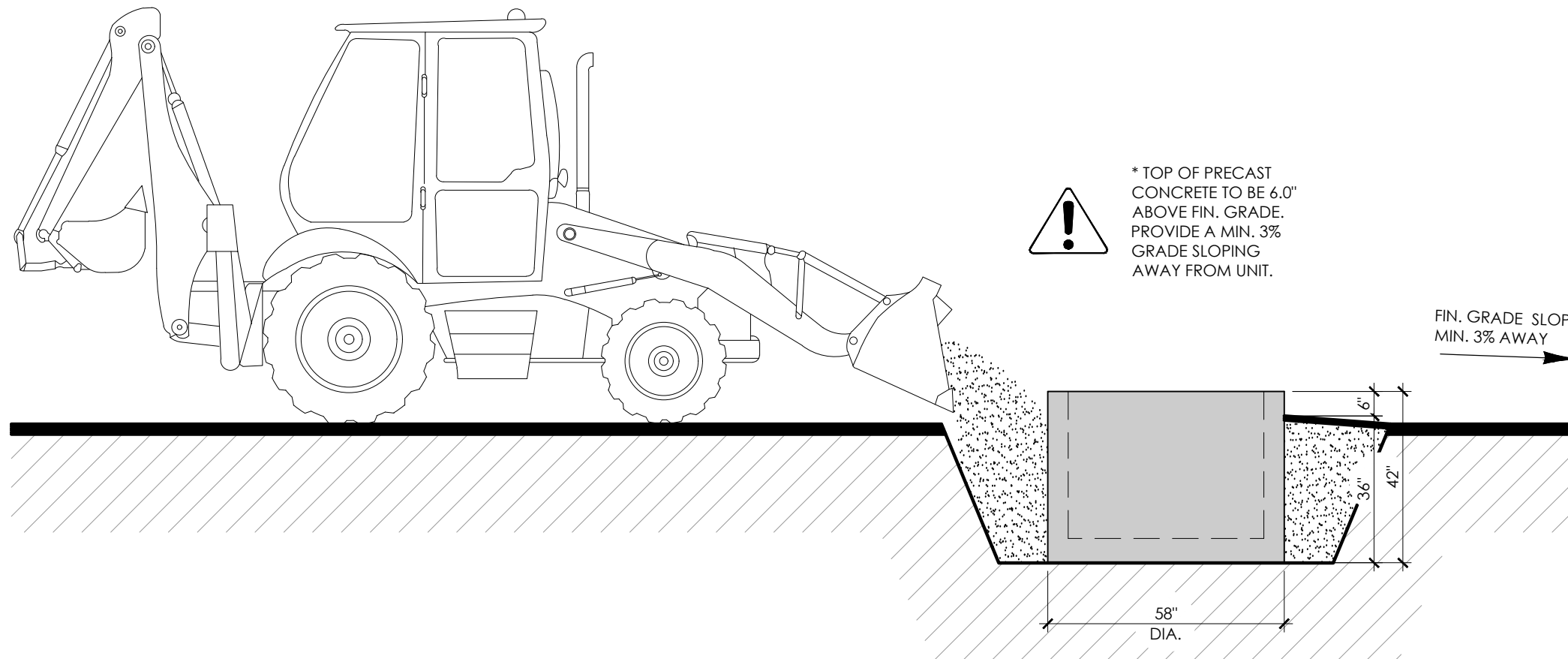
BACKFILL

STEP No.4



INSTALLATION INSTRUCTIONS

CS-2



STEP No.4 - BACKFILL

- SUTERA UNITS OVERALL MASS EXCEED THE NATURAL FORCES OF HYDROSTATIC PRESSURE AND WILL NOT FLOAT OUT OF THE GROUND, NO EXTRA MEASURES ARE REQUIRED TO KEEP IT IN THE GROUND.
- BACKFILL WITH NATIVE MATERIAL (EXCAVATED MATERIAL MAY BE USED IF SUITABLE).
- COMPACT IN SMALL LAYERS TO ACHIEVE 95% PROCTOR.
- DO NOT ALLOW DEBRIS OR WATER TO ENTER THE OPEN CONCRETE WELL, KEEP CLEAN AND DRY.

NOTE:
ALL DIMENSIONS ARE
IN INCHES UNLESS
OTHERWISE SPECIFIED

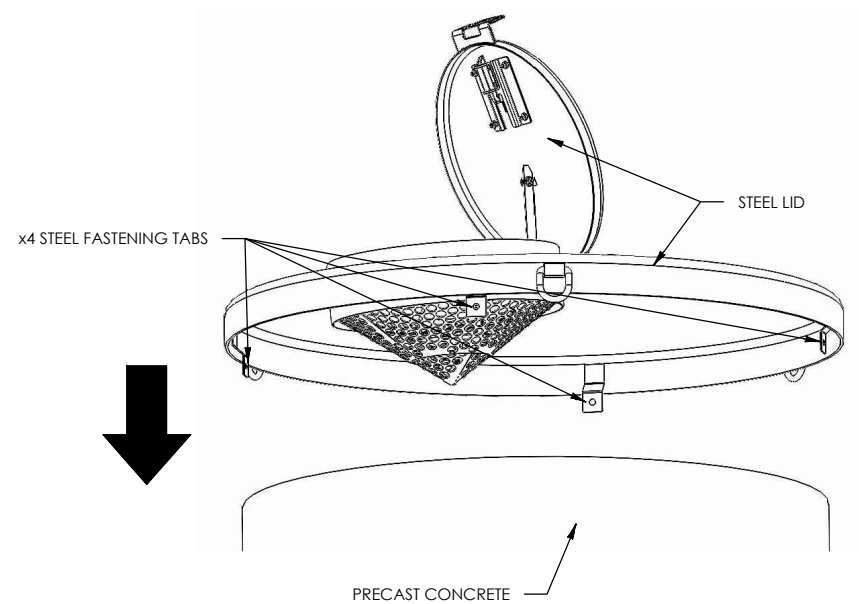
PLACING STEEL LID ON THE PRECAST CONCRETE WELL

STEP No.5

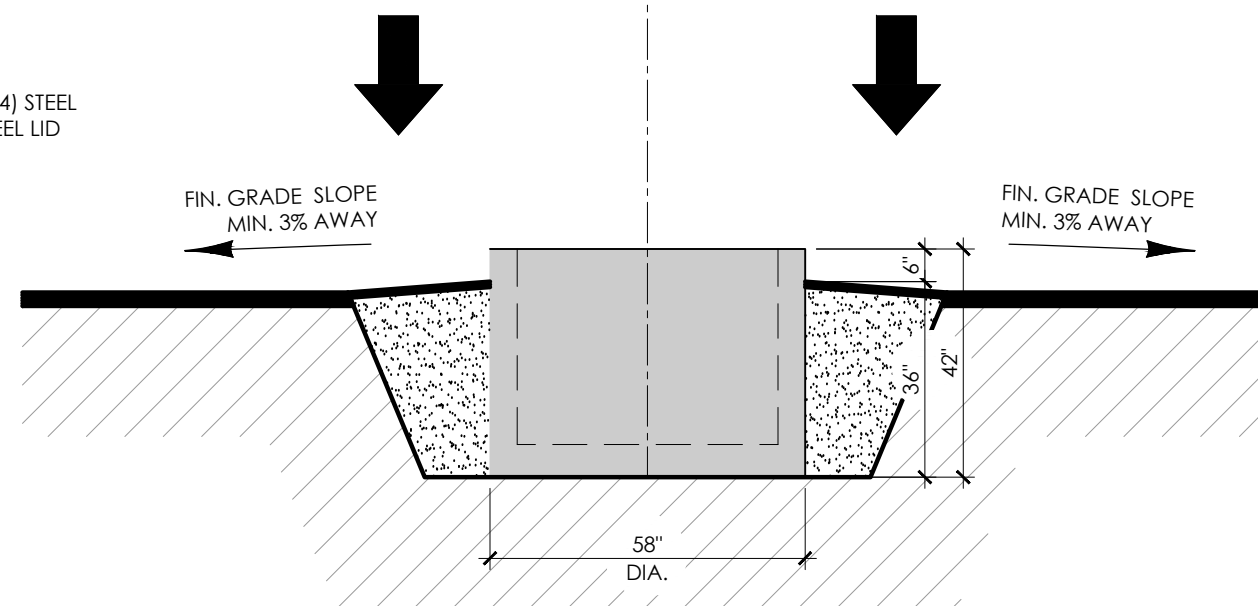
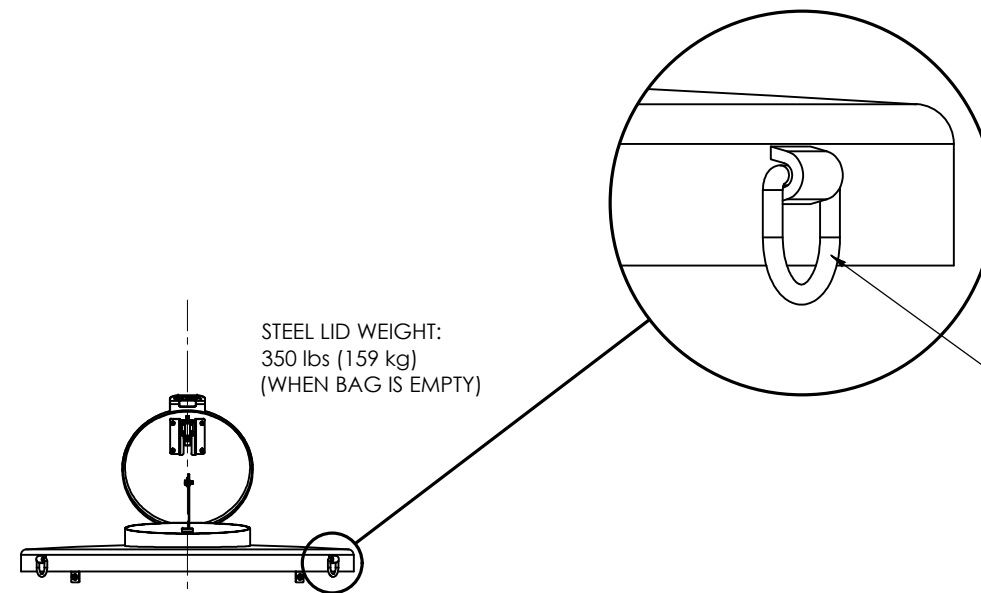


INSTALLATION
INSTRUCTIONS

CS-2



* TAKE CAUTION TO NOT BEND THE FOUR (4) STEEL FASTENING TABS WHEN LOWERING THE STEEL LID ONTO THE PRECAST CONCRETE WELL.



STEP No.5 - PLACING STEEL LID ON THE PRECAST WELL

- LIFT THE STEEL LID WITH THE REQUIRED LIFTING STRAPS CONNECTED TO THE THREE (3) WELDED D-RINGS, WEIGHT OF STEEL LID IS 350 lbs (159 kg).
- LOWER ONTO PRECAST CONCRETE WELL, TAKING CAUTION NOT TO BEND THE FOUR (4) FASTENING TABS.
- ALIGN THE ACCESS LID TO THE REQUIRED POSITION.

NOTE:
ALL DIMENSIONS ARE
IN INCHES UNLESS
OTHERWISE SPECIFIED

FASTENING STEEL LID TO PRECAST CONCRETE WELL

STEP No.6

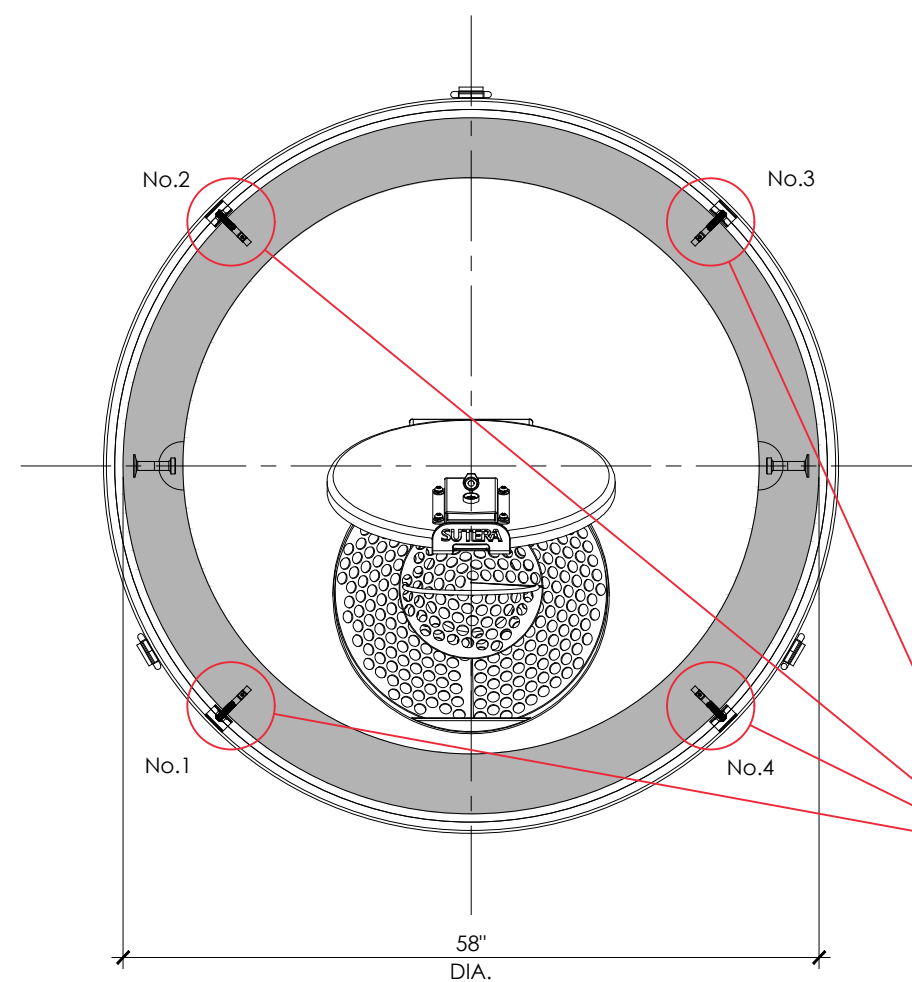


INSTALLATION
INSTRUCTIONS

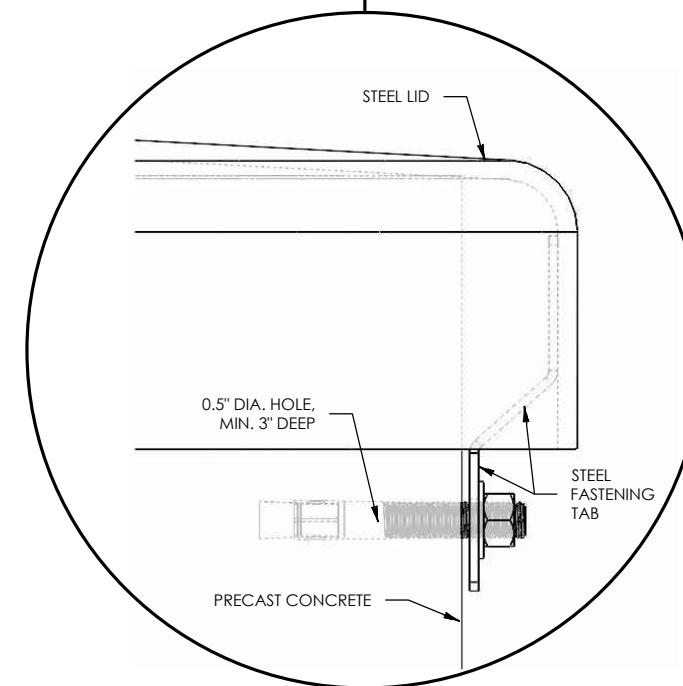
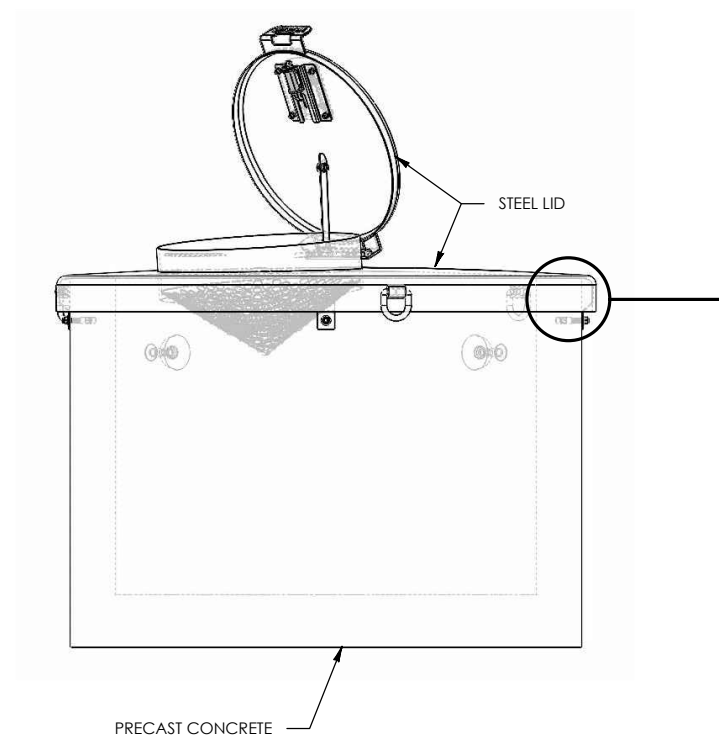
CS-2

STEP No.6 - FASTENING STEEL LID TO PRECAST CONCRETE WELL

- a. USING THE FOUR (4) STEEL FASTENING TABS AS A GUIDE, DRILL 0.5" DIA. HOLES 3.0" DEEP.
- c. INSTALL FOUR (4) 0.5" x 3.75" CONCRETE WEDGE ANCHORS AND TIGHTEN.



TOP VIEW



NOTE:
ALL DIMENSIONS ARE
IN INCHES UNLESS
OTHERWISE SPECIFIED



ENSURE THE FOLLOWING IS DONE PRIOR TO COMPLETION:

- ENSURE ALL DEBRIS AND WASTE IS REMOVED CAUSED BY INSTALLATION.
- WIPE CLEAN ENTIRE UNIT WITH CLEAN RAG AND MILD DETERGENT.
- SPRAY ALL EXPOSED STEEL WITH KROWN RUST PROOFING & LUBRICANT. DO NOT WIPE OFF IMMEDIATELY, ALLOW TO PENETRATE FOR 24 HRS.
- SPRAY ALL MOVING COMPONENTS, KEY HOLE AND UNDERSIDE OF PUSH PAD ON SLAM LATCH ASSEMBLY WITH WHITE LITHIUM GREASE.

INSTALLATION IS COMPLETE